



Drain, Waste & Vent (DWV) Product
PVC DWV Drain Waste & Vent Pipe and Fittings

PVC DWV Drain Waste & Vent Pipe and Fittings



PRODUCT

Contact Spears® for any Information not found.

Drain, Waste & Vent (DWV) Product
PVC DWV Drain Waste & Vent Pipe and Fittings & PVC DWV Drain Waste & Vent Fittings



PVC DWV Drain Waste & Vent Pipe

| Part Number | Size | Std Pk | Plit Qty | Prod Code | MSRP |
|-------------|------|--------|----------|-----------|------|
|-------------|------|--------|----------|-----------|------|

Schedule 40 Pipe

20" Lengths, Price Per Foot



Price Per Foot

| Part Number | Size | Std Pk | Plit Qty | Prod Code | MSRP |
|-------------|-------|--------|----------|-----------|--------|
| PD-400-012 | 1-1/4 | 20 | 3300 | 947 | 6.06 |
| PD-400-015 | 1-1/2 | 20 | 3020 | 947 | 6.85 |
| PD-400-020 | 2 | 20 | 2460 | 947 | 9.44 |
| PD-400-030 | 3 | 20 | 1160 | 947 | 18.61 |
| PD-400-040 | 4 | 20 | 1000 | 947 | 26.07 |
| PD-400-060 | 6 | 20 | 340 | 947 | 47.09 |
| PD-400-080 | 8 | 20 | 280 | 947 | 83.46 |
| PD-400-100 | 10 | 20 | 220 | 947 | 113.61 |
| PD-400-120 | 12 | 20 | 160 | 947 | 164.54 |
| PD-400-140 | 14 | 20 | 60 | 944 | 66.06 |
| PD-400-160 | 16 | 20 | 60 | 944 | 80.86 |

PVC DWV Drain Waste & Vent Fittings
STANDARDS & SPECIFICATIONS

Standards provide greater assurance of product performance and consistency, and are available to assist design engineers in system specification. The most frequently referenced industry standards for plastic piping systems are ASTM Standard Specifications and Practices. Along with ASTM Standards, additional product specifications and certifications form the basis of product conformance to which Spears® products are manufactured.

ASTM D 2665 Poly (Vinyl Chloride) (PVC) Plastic Drain, Waste, and Vent Pipe and Fittings.

ASTM D 3311 Drain, Waste, and Vent (DWV) Plastic Fittings Patterns.

ASTM F 1866 Poly (Vinyl Chloride) (PVC) Plastic Schedule 40 Drainage and DWV Fittings.Fabricated Fittings.

ASTM D 1784 Rigid Poly (Vinyl Chloride) (PVC) Compounds and Chlorinated Poly Fittings.(Vinyl Chloride) (CPVC) Compounds.

 NSF® International Standard 14 (NSF®-dww) Certified
 NSF® International Certified to Uniform Plumbing Code (NSF®-U.P. Code). See official listing

P100 Coupling

H x H



| Part Number | Size | Std Pk | Plit Qty | Prod Code | MSRP |
|-------------|-------|--------|----------|-----------|--------|
| P100-015 | 1-1/2 | 100 | 7200 | 051 | 2.78 |
| P100-020 | 2 | 100 | 3600 | 051 | 3.73 |
| P100-030 | 3 | 60 | 840 | 051 | 13.68 |
| P100-040 | 4 | 25 | 450 | 051 | 23.50 |
| P100-060 | 6 | 5 | 175 | 051 | 81.27 |
| P100-080 | 8 | 8 | 64 | 051 | 135.07 |
| P100-100 | 10 | 1 | 36 | 052 | 381.70 |
| P100-120 | 12 | 1 | 21 | 052 | 649.99 |
| P100-140 | 14 | 1 | 12 | 052 | 996.52 |

| Part Number | Size | Std Pk | Plit Qty | Prod Code | MSRP |
|-------------|------|--------|----------|-----------|------|
|-------------|------|--------|----------|-----------|------|

P101 Female Adapter

FPT x H



| | | | | | |
|----------|-------|-----|------|-----|--------|
| P101-015 | 1-1/2 | 100 | 4800 | 051 | 5.52 |
| P101-020 | 2 | 100 | 3500 | 051 | 9.34 |
| P101-030 | 3 | 35 | 1260 | 051 | 25.26 |
| P101-040 | 4 | 10 | 480 | 051 | 32.33 |
| P101-060 | 6 | 10 | 180 | 051 | 108.58 |

P102 Pipe Increaser - Reducer

H x H



| | | | | | |
|----------|---------|----|------|-----|---------|
| P102-251 | 2X1-1/2 | 25 | 4200 | 051 | 8.20 |
| P102-337 | 3X1-1/2 | 25 | 1200 | 051 | 26.04 |
| P102-338 | 3X2 | 20 | 960 | 051 | 20.00 |
| P102-420 | 4X2 | 10 | 720 | 051 | 39.66 |
| P102-422 | 4X3 | 20 | 720 | 051 | 42.18 |
| P102-530 | 6X3 | 6 | 180 | 051 | 213.38 |
| P102-532 | 6X4 | 4 | 144 | 051 | 172.64 |
| P102-582 | 8X4 | 2 | 96 | 051 | 237.62 |
| P102-585 | 8X6 | 2 | 96 | 051 | 193.18 |
| P102-624 | 10X4 | 2 | 60 | 052 | 609.01 |
| P102-626 | 10X6 | 1 | 36 | 052 | 975.36 |
| P102-628 | 10X8 | 1 | 36 | 052 | 1026.21 |
| P102-666 | 12X6 | 1 | 21 | 052 | 1054.76 |
| P102-668 | 12X8 | 1 | 21 | 052 | 1068.92 |

Pipe Increaser - Eccentric Reducer

H x H



| | | | | | |
|-----------|-----|----|-----|-----|-------|
| P102-338E | 3X2 | 20 | 600 | 051 | 58.29 |
|-----------|-----|----|-----|-----|-------|

P103 Trap Adapter - Male

S x SLIP



| | | | | | |
|----------|-------|----|------|-----|-------|
| P103-015 | 1-1/2 | 50 | 5250 | 051 | 7.56 |
| P103-020 | 2 | 25 | 4200 | 051 | 20.79 |

P103P Trap Adapter - Male

S x SLIP w/Plastic Nut - Built-in Washer



| | | | | | |
|-----------|-------------|----|------|-----|-------|
| P103P-212 | 1-1/2X1-1/4 | 75 | 5400 | 051 | 8.60 |
| P103P-015 | 1-1/2 | 50 | 5250 | 051 | 8.03 |
| P103P-020 | 2 | 25 | 4200 | 051 | 27.56 |



Drain, Waste & Vent (DWV) Product
PVC DWV Drain Waste & Vent Fittings

PVC DWV Drain Waste & Vent Fittings

| Part Number | Size | Std Pk | Pklt Qty | Prod Code | MSRP |
|-------------|------|--------|----------|-----------|------|
|-------------|------|--------|----------|-----------|------|

P103R Trap Adapter - Male with 1-1/2 Plastic Nut & Washer and 1-1/2 x1-1/4 Washer

S x SLIP w/Plastic Nut

| | | | | | |
|-----------|-------|----|------|-----|------|
| P103R-015 | 1-1/2 | 50 | 3600 | 051 | 8.29 |
|-----------|-------|----|------|-----|------|



P103X Trap Adapter-Male

S x SLIP w/Chrome Nut & Washer

| | | | | | |
|-----------|-------------|-----|------|-----|-------|
| P103X-212 | 1-1/2X1-1/4 | 100 | 7200 | 051 | 12.11 |
| P103X-015 | 1-1/2 | 50 | 5250 | 051 | 35.00 |
| P103X-020 | 2 | 25 | 4200 | 051 | 35.31 |



P104 Trap Adapter - Female

H x SLIP

| | | | | | |
|----------|-------|----|------|-----|-------|
| P104-012 | 1-1/4 | 50 | 8400 | 051 | 5.52 |
| P104-015 | 1-1/2 | 50 | 8400 | 051 | 5.86 |
| P104-020 | 2 | 50 | 3600 | 051 | 16.91 |



P104P Trap Adapter - Female

H x SLIP w/Plastic Nut

| | | | | | |
|-----------|-------------|----|------|-----|-------|
| P104P-212 | 1-1/2X1-1/4 | 50 | 5250 | 051 | 8.69 |
| P104P-012 | 1-1/4 | 50 | 5250 | 051 | 25.61 |
| P104P-015 | 1-1/2 | 50 | 5250 | 051 | 7.38 |



P104R Trap Adapter - Female w/1-1/2 Plastic Nut & Washer and 1-1/2x1-1/4 Washer

H x SLIP w/Plastic Nut

| | | | | | |
|-----------|-------|----|------|-----|------|
| P104R-015 | 1-1/2 | 50 | 3600 | 051 | 8.43 |
|-----------|-------|----|------|-----|------|



P104X Trap Adapter - Female

H x SLIP w/Chrome Nut & Washer

| | | | | | |
|-----------|-------------|----|------|-----|-------|
| P104X-212 | 1-1/2X1-1/4 | 50 | 3600 | 051 | 12.11 |
| P104X-015 | 1-1/2 | 50 | 3600 | 051 | 35.00 |
| P104X-020 | 2 | 50 | 3600 | 051 | 35.31 |



P000P HDPE Slip Joint Nut

(Plastic Nut)

| | | | | | |
|-----------|-------|-----|-------|-----|------|
| P000P-015 | 1-1/2 | 100 | 18000 | 051 | 2.60 |
|-----------|-------|-----|-------|-----|------|



| Part Number | Size | Std Pk | Pklt Qty | Prod Code | MSRP |
|-------------|------|--------|----------|-----------|------|
|-------------|------|--------|----------|-----------|------|

**P000P HDPE Slip Joint Nut (continued)
(Plastic Nut)**

| | | | | | |
|-----------|-------------|-----|-------|-----|------|
| P000P-020 | 2 | 450 | 13500 | 051 | 4.12 |
| P000P-169 | 1-1/4X1-1/2 | 350 | 16800 | 051 | 4.46 |

P105 Fitting Cleanout Adapter

S x FPT

| | | | | | |
|----------|-------|----|------|-----|--------|
| P105-015 | 1-1/2 | 50 | 5250 | 051 | 6.36 |
| P105-020 | 2 | 50 | 3600 | 051 | 8.96 |
| P105-030 | 3 | 25 | 1200 | 051 | 25.31 |
| P105-040 | 4 | 10 | 720 | 051 | 41.60 |
| P105-060 | 6 | 10 | 180 | 051 | 123.97 |
| P105-080 | 8 | 8 | 112 | 051 | 347.24 |



P105H Female Cleanout Adapter

H x FPT

| | | | | | |
|-----------|---|----|-----|-----|--------|
| P105H-040 | 4 | 10 | 720 | 051 | 32.33 |
| P105H-060 | 6 | 10 | 180 | 051 | 108.58 |
| P105H-080 | 8 | 8 | 112 | 051 | 140.96 |



P105X Fitting Cleanout Adapter w/C.O. Plug

S x FPT

| | | | | | |
|-----------|-------|----|------|-----|--------|
| P105X-015 | 1-1/2 | 50 | 5250 | 051 | 9.57 |
| P105X-020 | 2 | 50 | 3600 | 051 | 13.08 |
| P105X-030 | 3 | 25 | 900 | 051 | 26.42 |
| P105X-040 | 4 | 10 | 480 | 051 | 47.84 |
| P105X-060 | 6 | 10 | 180 | 051 | 175.48 |
| P105X-080 | 8 | 8 | 112 | 051 | 412.14 |



* Fabricated PVC Gray With Custom Taper Thread and HDPE Plug

P106 Cleanout Plug

MPT

| | | | | | |
|----------|-------|----|-------|-----|--------|
| P106-015 | 1-1/2 | 50 | 12000 | 051 | 5.23 |
| P106-020 | 2 | 50 | 8400 | 051 | 5.38 |
| P106-025 | 2-1/2 | 50 | 5250 | 051 | 17.29 |
| P106-030 | 3 | 25 | 2625 | 051 | 10.36 |
| P106-040 | 4 | 30 | 2160 | 051 | 15.34 |
| P106-060 | 6 | 10 | 1050 | 051 | 50.99 |
| P106-080 | 8 | 12 | 576 | 051 | 216.34 |



P107 Flush Bushing

S x H

| | | | | | |
|----------|---------|----|------|-----|-------|
| P107-251 | 2X1-1/2 | 50 | 8400 | 051 | 5.02 |
| P107-337 | 3X1-1/2 | 30 | 2520 | 051 | 24.37 |
| P107-338 | 3X2 | 30 | 2520 | 051 | 11.18 |



Drain, Waste & Vent (DWV) Product
PVC DWV Drain Waste & Vent Fittings



PVC DWV Drain Waste & Vent Fittings

| Part Number | Size | Std Pk | Plit Qty | Prod Code | MSRP |
|-------------|------|--------|----------|-----------|------|
|-------------|------|--------|----------|-----------|------|

P107 Flush Bushing (continued)

S x H

| | | | | | |
|-----------------------|-------|----|------|-----|---------|
| P107-420 | 4X2 | 30 | 1080 | 051 | 42.46 |
| P107-422 | 4X3 | 25 | 1200 | 051 | 21.62 |
| P107-532 | 6X4 | 10 | 300 | 051 | 112.22 |
| P107-582 | 8X4 | 3 | 144 | 051 | 205.39 |
| P107-585 | 8X6 | 4 | 120 | 051 | 222.82 |
| P107-623 ¹ | 10X3 | 4 | 56 | 051 | 486.54 |
| P107-624 ¹ | 10X4 | 2 | 60 | 052 | 496.98 |
| P107-626 | 10X6 | 3 | 90 | 052 | 722.82 |
| P107-628 | 10X8 | 3 | 90 | 052 | 805.68 |
| P107-664 ¹ | 12X4 | 2 | 42 | 052 | 1393.03 |
| P107-666 ¹ | 12X6 | 2 | 42 | 052 | 1081.34 |
| P107-668 ¹ | 12X8 | 2 | 60 | 052 | 1112.61 |
| P107-670 | 12X10 | 2 | 60 | 052 | 1135.70 |

¹Outlet-sized with Bushing



P108 Flush Bushing (Cleanout Adapter)

S x FPT

| | | | | | |
|----------|-------------|----|-------|-----|---------|
| P108-212 | 1-1/2X1-1/4 | 50 | 12000 | 051 | 15.63 |
| P108-628 | 10X8 | 4 | 56 | 052 | 1546.18 |
| P108-668 | 12X8 | 1 | 30 | 052 | 2246.09 |



P108X Flush Bushing (Cleanout Adapter) w/Plug

S x FPT

| | | | | | |
|-----------|------|---|----|-----|---------|
| P108X-628 | 10X8 | 4 | 56 | 052 | 2275.20 |
| P108X-668 | 12X8 | 1 | 30 | 052 | 3329.00 |



P109 Male Adapter (Will not accept tail piece)

MPT x H

| | | | | | |
|----------|-------|----|------|-----|--------|
| P109-015 | 1-1/2 | 50 | 5250 | 051 | 5.72 |
| P109-020 | 2 | 50 | 3600 | 051 | 7.38 |
| P109-030 | 3 | 25 | 1200 | 051 | 21.42 |
| P109-040 | 4 | 25 | 900 | 051 | 47.26 |
| P109-060 | 6 | 7 | 245 | 051 | 142.30 |



P110 Flush C.O. Plug

MPT

| | | | | | |
|----------|-------|----|-------|-----|-------|
| P110-015 | 1-1/2 | 50 | 19200 | 051 | 21.06 |
| P110-020 | 2 | 25 | 9600 | 051 | 17.64 |
| P110-025 | 2-1/2 | 50 | 5250 | 051 | 22.17 |
| P110-030 | 3 | 50 | 5250 | 051 | 20.42 |
| P110-040 | 4 | 25 | 2400 | 051 | 20.02 |
| P110-060 | 6 | 10 | 960 | 051 | 50.49 |

| Part Number | Size | Std Pk | Plit Qty | Prod Code | MSRP |
|-------------|------|--------|----------|-----------|------|
|-------------|------|--------|----------|-----------|------|

P116 Cap

SOC



| | | | | | |
|----------|-------|----|------|-----|--------|
| P116-015 | 1-1/2 | 20 | 7680 | 051 | 11.81 |
| P116-020 | 2 | 15 | 5760 | 051 | 19.59 |
| P116-030 | 3 | 10 | 1680 | 051 | 34.01 |
| P116-040 | 4 | 5 | 840 | 051 | 48.52 |
| P116-060 | 6 | 5 | 240 | 051 | 122.54 |
| P116-080 | 8 | 3 | 90 | 051 | 332.89 |

Note: 8" Cap is Domed Style

P117 Transition Coupling (S&D Hub by DWV Hub)

H x H



| | | | | | |
|----------|-----|----|-----|-----|-------|
| P117-040 | 4 | 20 | 700 | 051 | 45.57 |
| P117-422 | 4X3 | 20 | 600 | 051 | 34.71 |

P118 Adapter Bushing (Adapts DWV Hub to S&D Spigot)

DWV SPIGOT x S&D HUB



| | | | | | |
|-----------|---|----|------|-----|--------|
| P118-030 | 3 | 25 | 1800 | 051 | 16.79 |
| P118-040 | 4 | 10 | 1050 | 051 | 18.14 |
| P118-060F | 6 | 5 | 240 | 390 | 105.02 |

P119 No-Hub Adapter

S x H



| | | | | | |
|----------|---------|----|------|-----|-------|
| P119-015 | 1-1/2 | 25 | 4200 | 051 | 31.70 |
| P119-020 | 2 | 25 | 2625 | 051 | 15.36 |
| P119-030 | 3 | 20 | 960 | 051 | 22.20 |
| P119-040 | 4 | 15 | 720 | 051 | 28.63 |
| P119-251 | 2X1-1/2 | 35 | 3675 | 051 | 30.03 |
| P119-422 | 4X3 | 10 | 720 | 051 | 36.54 |

P122 Spigot Adapter, Cast Iron

H x H



| | | | | | |
|----------|---|----|-----|-----|-------|
| P122-040 | 4 | 15 | 210 | 051 | 59.28 |
|----------|---|----|-----|-----|-------|

P123 Hub Adapter, Cast Iron

H x S



| | | | | | |
|----------|---|----|------|-----|-------|
| P123-020 | 2 | 20 | 1440 | 051 | 24.89 |
| P123-030 | 3 | 25 | 750 | 051 | 44.62 |
| P123-040 | 4 | 10 | 350 | 051 | 78.02 |



Drain, Waste & Vent (DWV) Product
PVC DWV Drain Waste & Vent Fittings

PVC DWV Drain Waste & Vent Fittings

| Part Number | Size | Std Pk | Plit Qty | Prod Code | MSRP |
|-------------|------|--------|----------|-----------|------|
|-------------|------|--------|----------|-----------|------|

P123R Hub Adapter, Cast Iron, Increaser

H x S

Plain End: Joint can be made with compression gasket or plastic lead & seal rope - Do Not use hot lead

| | | | | | |
|-----------|----------------|----|------|-----|-------|
| P123R-213 | 1-1/2X2 | 10 | 1680 | 051 | 28.53 |
| P123R-342 | 3X4 | 10 | 350 | 051 | 52.59 |

P130 Repair Coupling

H x H

| | | | | | |
|----------|--------------|----|------|-----|--------|
| P130-015 | 1-1/2 | 25 | 6000 | 051 | 16.06 |
| P130-020 | 2 | 25 | 2625 | 051 | 11.26 |
| P130-030 | 3 | 10 | 960 | 051 | 28.33 |
| P130-040 | 4 | 5 | 480 | 051 | 54.51 |
| P130-060 | 6 | 5 | 175 | 051 | 254.62 |
| P130-080 | 8 | 8 | 64 | 051 | 400.92 |
| P130-100 | 10 | 1 | 36 | 052 | 528.89 |

P131 Test Cap

| | | | | | |
|----------|--------------|-----|-------|-----|------|
| P131-015 | 1-1/2 | 100 | 38400 | 051 | 4.24 |
| P131-020 | 2 | 100 | 24000 | 051 | 4.01 |
| P131-030 | 3 | 50 | 8400 | 051 | 5.23 |
| P131-040 | 4 | 100 | 4800 | 051 | 6.51 |

P300 1/4 Bend

H x H

| | | | | | |
|----------|----------------|-----|------|-----|---------|
| P300-015 | 1-1/2 | 100 | 3000 | 051 | 6.23 |
| P300-020 | 2 | 50 | 1500 | 051 | 9.19 |
| P300-030 | 3 | 25 | 350 | 051 | 28.44 |
| P300-040 | 4 | 10 | 180 | 051 | 51.93 |
| P300-060 | 6 | 4 | 56 | 051 | 208.46 |
| P300-080 | 8 | 2 | 28 | 051 | 269.28 |
| P300-100 | 10 | 1 | 12 | 052 | 1034.01 |
| P300-120 | 12 | 1 | 5 | 052 | 1592.53 |
| P300-251 | 2X1-1/2 | 10 | 1050 | 051 | 48.76 |

P300S 1/4 Bend with Side Inlet

ALL HUB

| | | | | | |
|-----------|--------------|----|-----|-----|-------|
| P300S-338 | 3X3X2 | 10 | 360 | 051 | 56.34 |
|-----------|--------------|----|-----|-----|-------|

| Part Number | Size | Std Pk | Plit Qty | Prod Code | MSRP |
|-------------|------|--------|----------|-----------|------|
|-------------|------|--------|----------|-----------|------|

P302 1/4 Bend, Street

S x H

| | | | | | |
|----------|--------------|-----|------|-----|---------|
| P302-015 | 1-1/2 | 100 | 3000 | 051 | 7.63 |
| P302-020 | 2 | 50 | 1500 | 051 | 11.81 |
| P302-030 | 3 | 20 | 360 | 051 | 29.26 |
| P302-040 | 4 | 10 | 180 | 051 | 57.53 |
| P302-060 | 6 | 4 | 56 | 051 | 266.04 |
| P302-080 | 8 | 2 | 28 | 051 | 530.34 |
| P302-100 | 10 | 1 | 12 | 052 | 1029.59 |
| P302-120 | 12 | 1 | 5 | 052 | 1586.66 |

P303 1/4 Bend w/Low Heel Inlet

H x H x H

| | | | | | |
|----------|--------------|----|-----|-----|-------|
| P303-338 | 3X3X2 | 25 | 200 | 051 | 49.71 |
| P303-420 | 4X4X2 | 6 | 180 | 051 | 98.07 |

P304 Long Sweep 1/4 Bend

H x H

| | | | | | |
|----------|--------------|----|------|-----|--------|
| P304-015 | 1-1/2 | 50 | 1750 | 051 | 14.28 |
| P304-020 | 2 | 25 | 875 | 051 | 15.40 |
| P304-030 | 3 | 10 | 360 | 051 | 35.41 |
| P304-040 | 4 | 5 | 150 | 051 | 67.59 |
| P304-060 | 6 | 5 | 35 | 051 | 285.04 |

6" size assembled from 2-Molded 1/8 Bends

P306 1/4 Bend w/Low Heel Inlet

S x H x H

| | | | | | |
|----------|--------------|---|-----|-----|-------|
| P306-420 | 4X4X2 | 5 | 150 | 051 | 98.07 |
|----------|--------------|---|-----|-----|-------|

P309 Long Sweep 1/4 Bend, Street

H x S

| | | | | | |
|----------|--------------|----|------|-----|--------|
| P309-015 | 1-1/2 | 50 | 1750 | 051 | 18.87 |
| P309-020 | 2 | 25 | 900 | 051 | 23.96 |
| P309-030 | 3 | 20 | 280 | 051 | 65.92 |
| P309-040 | 4 | 5 | 150 | 051 | 101.51 |
| P309-060 | 6 | 5 | 35 | 051 | 469.26 |

P310 1/4 Bend, Street w/Low Heel Inlet

H x S x H

| | | | | | |
|----------|--------------|----|-----|-----|-------|
| P310-338 | 3X3X2 | 15 | 270 | 051 | 88.94 |
|----------|--------------|----|-----|-----|-------|

Drain, Waste & Vent (DWV) Product
PVC DWV Drain Waste & Vent Fittings



PVC DWV Drain Waste & Vent Fittings

| Part Number | Size | Std Pk | Plit Qty | Prod Code | MSRP |
|-------------|------|--------|----------|-----------|------|
|-------------|------|--------|----------|-----------|------|

P319 1/6 Bend

H x H



| | | | | | |
|----------|-------|----|------|-----|-------|
| P319-015 | 1-1/2 | 40 | 2880 | 051 | 11.22 |
| P319-020 | 2 | 25 | 1200 | 051 | 14.94 |
| P319-030 | 3 | 20 | 600 | 051 | 53.00 |
| P319-040 | 4 | 10 | 180 | 051 | 75.36 |

P320 1/6 Bend, Street

H x S



| | | | | | |
|----------|-------|----|------|-----|-------|
| P320-015 | 1-1/2 | 40 | 2880 | 051 | 22.37 |
| P320-020 | 2 | 25 | 1800 | 051 | 30.31 |
| P320-030 | 3 | 20 | 600 | 051 | 70.94 |
| P320-040 | 4 | 10 | 300 | 051 | 94.83 |

P321 1/8 Bend

H x H



| | | | | | |
|-----------------------|-------|-----|------|-----|---------|
| P321-015 | 1-1/2 | 100 | 3000 | 051 | 5.72 |
| P321-020 | 2 | 50 | 1500 | 051 | 8.76 |
| P321-030 | 3 | 25 | 450 | 051 | 24.10 |
| P321-040 | 4 | 15 | 270 | 051 | 41.46 |
| P321-060 | 6 | 5 | 90 | 051 | 182.68 |
| P321-080 | 8 | 1 | 36 | 051 | 239.16 |
| P321-100 ¹ | 10 | 1 | 21 | 052 | 867.66 |
| P321-120 ¹ | 12 | 1 | 12 | 052 | 1193.93 |

¹ Fittings are hubless schedule 40 design

P323 1/8 Bend, Street

H x S



| | | | | | |
|----------|-------|-----|------|-----|---------|
| P323-015 | 1-1/2 | 100 | 3600 | 051 | 5.81 |
| P323-020 | 2 | 50 | 1800 | 051 | 8.88 |
| P323-030 | 3 | 25 | 450 | 051 | 23.18 |
| P323-040 | 4 | 10 | 300 | 051 | 37.53 |
| P323-060 | 6 | 5 | 90 | 051 | 214.12 |
| P323-080 | 8 | 1 | 36 | 051 | 259.58 |
| P323-100 | 10 | 1 | 18 | 052 | 1197.68 |
| P323-120 | 12 | 1 | 10 | 052 | 1911.00 |

P324 1/16 Bend

H x H



| | | | | | |
|----------|-------|----|------|-----|-------|
| P324-015 | 1-1/2 | 50 | 3600 | 051 | 8.20 |
| P324-020 | 2 | 25 | 1800 | 051 | 10.13 |

| Part Number | Size | Std Pk | Plit Qty | Prod Code | MSRP |
|-------------|------|--------|----------|-----------|------|
|-------------|------|--------|----------|-----------|------|

P324 1/16 Bend (continued)

H x H

| | | | | | |
|----------|---|----|-----|-----|--------|
| P324-030 | 3 | 20 | 720 | 051 | 26.01 |
| P324-040 | 4 | 15 | 270 | 051 | 39.66 |
| P324-060 | 6 | 3 | 105 | 051 | 238.63 |
| P324-080 | 8 | 2 | 36 | 051 | 399.14 |

P326 1/16 Bend, Street

H x S



| | | | | | |
|----------|-------|----|------|-----|--------|
| P326-015 | 1-1/2 | 50 | 3600 | 051 | 23.18 |
| P326-020 | 2 | 25 | 1800 | 051 | 24.74 |
| P326-030 | 3 | 20 | 720 | 051 | 39.00 |
| P326-040 | 4 | 10 | 350 | 051 | 56.81 |
| P326-060 | 6 | 5 | 90 | 051 | 231.16 |
| P326-080 | 8 | 2 | 36 | 051 | 318.19 |

P327 Double 1/4 Bend

H x H x H



| | | | | | |
|----------|-------|----|------|-----|--------|
| P327-015 | 1-1/2 | 20 | 1440 | 051 | 20.41 |
| P327-020 | 2 | 25 | 875 | 051 | 28.53 |
| P327-030 | 3 | 15 | 270 | 051 | 87.26 |
| P327-040 | 4 | 6 | 108 | 051 | 120.48 |

P327 Double 1/4 Bend, Reducing

H x H x H



| | | | | | |
|----------|---------------|----|------|-----|-------|
| P327-241 | 2X1-1/2X1-1/2 | 25 | 1200 | 051 | 27.18 |
|----------|---------------|----|------|-----|-------|

P329 Closet Bend, Reducing

H x H



| | | | | | |
|----------|-----|----|-----|-----|-------|
| P329-342 | 3X4 | 10 | 300 | 051 | 44.68 |
|----------|-----|----|-----|-----|-------|

P330 Closet Bend, Reducing

H x S



| | | | | | |
|----------|-----|----|-----|-----|-------|
| P330-342 | 3X4 | 10 | 300 | 051 | 60.44 |
|----------|-----|----|-----|-----|-------|

P330X Closet Bend, Reducing with TEST CAP

H x S



| | | | | | |
|-----------|-----|----|-----|-----|-------|
| P330X-342 | 3X4 | 10 | 300 | 051 | 82.90 |
|-----------|-----|----|-----|-----|-------|



Drain, Waste & Vent (DWV) Product
PVC DWV Drain Waste & Vent Fittings

PVC DWV Drain Waste & Vent Fittings

| Part Number | Size | Std Pk | Pltt Qty | Prod Code | MSRP |
|-------------|------|--------|----------|-----------|------|
|-------------|------|--------|----------|-----------|------|

P331 Vent Ell

H x H



| | | | | | |
|----------|-------|----|------|-----|---------|
| P331-015 | 1-1/2 | 25 | 1800 | 051 | 11.90 |
| P331-020 | 2 | 30 | 1440 | 051 | 16.60 |
| P331-030 | 3 | 25 | 450 | 051 | 41.86 |
| P331-040 | 4 | 10 | 180 | 051 | 105.31 |
| P331-060 | 6 | 5 | 40 | 051 | 331.92 |
| P331-080 | 8 | 2 | 28 | 051 | 345.87 |
| P331-100 | 10 | 1 | 16 | 052 | 982.24 |
| P331-120 | 12 | 1 | 12 | 052 | 1513.02 |

P333 Vent Ell, Street

H x S



| | | | | | |
|----------|-------|----|------|-----|--------|
| P333-015 | 1-1/2 | 25 | 3150 | 051 | 10.13 |
| P333-020 | 2 | 20 | 1440 | 051 | 17.32 |
| P333-030 | 3 | 25 | 450 | 051 | 45.53 |
| P333-040 | 4 | 10 | 300 | 051 | 157.98 |

P400 Sanitary Tee

ALL HUB



| | | | | | |
|----------|-------|----|------|-----|---------|
| P400-015 | 1-1/2 | 60 | 1800 | 051 | 10.73 |
| P400-020 | 2 | 30 | 900 | 051 | 15.80 |
| P400-030 | 3 | 30 | 240 | 051 | 40.56 |
| P400-040 | 4 | 5 | 150 | 051 | 70.63 |
| P400-060 | 6 | 6 | 42 | 051 | 322.12 |
| P400-080 | 8 | 2 | 16 | 051 | 713.67 |
| P400-100 | 10 | 1 | 7 | 052 | 2417.34 |
| P400-120 | 12 | 1 | 5 | 052 | 3369.99 |

P401 Sanitary Tee, Reducing

ALL HUB



| | | | | | |
|-----------------------|---------------|----|-----|-----|--------|
| P401-241 | 2X1-1/2X1-1/2 | 25 | 875 | 051 | 13.87 |
| P401-251 | 2X2X1-1/2 | 50 | 900 | 051 | 13.97 |
| P401-257 | 2X1-1/2X2 | 25 | 875 | 051 | 16.82 |
| P401-337 | 3X3X1-1/2 | 10 | 350 | 051 | 25.73 |
| P401-338 | 3X3X2 | 10 | 350 | 051 | 30.31 |
| P401-419 ¹ | 4X1-1/2 | 10 | 300 | 051 | 73.11 |
| P401-420 | 4X4X2 | 10 | 300 | 051 | 66.06 |
| P401-422 | 4X4X3 | 10 | 180 | 051 | 89.77 |
| P401-532 | 6X4 | 4 | 72 | 051 | 311.51 |
| P401-582 ¹ | 8X4 | 2 | 16 | 051 | 980.77 |

¹ Sized with bushing

| Part Number | Size | Std Pk | Pltt Qty | Prod Code | MSRP |
|-------------|------|--------|----------|-----------|------|
|-------------|------|--------|----------|-----------|------|

P403 Sanitary Tee, Street

S x H x H



| | | | | | |
|----------|-------|----|------|-----|---------|
| P403-015 | 1-1/2 | 20 | 1440 | 051 | 28.94 |
| P403-020 | 2 | 25 | 750 | 051 | 31.64 |
| P403-030 | 3 | 30 | 210 | 051 | 52.58 |
| P403-040 | 4 | 10 | 140 | 051 | 137.32 |
| P403-060 | 6 | 4 | 32 | 051 | 279.34 |
| P403-080 | 8 | 2 | 16 | 051 | 955.84 |
| P403-100 | 10 | 1 | 10 | 052 | 2678.32 |
| P403-120 | 12 | 1 | 8 | 052 | 4011.59 |

P404 Sanitary Tee, Street, Reducing

S x H x H



| | | | | | |
|----------|---------------|----|------|-----|-------|
| P404-241 | 2X1-1/2X1-1/2 | 50 | 1500 | 051 | 26.41 |
| P404-251 | 2X2X1-1/2 | 50 | 900 | 051 | 24.73 |
| P404-257 | 2X1-1/2X2 | 50 | 900 | 051 | 23.90 |
| P404-337 | 3X3X1-1/2 | 10 | 480 | 051 | 55.01 |
| P404-338 | 3X3X2 | 10 | 350 | 051 | 51.92 |
| P404-420 | 4X4X2 | 5 | 240 | 051 | 82.90 |
| P404-422 | 4X4X3 | 5 | 150 | 051 | 92.92 |

P416 Sanitary Tee with Left Side Inlet

ALL HUB



| | | | | | |
|----------|-------------|----|-----|-----|--------|
| P416-337 | 3X3X3X1-1/2 | 10 | 180 | 051 | 78.50 |
| P416-338 | 3X3X3X2 | 10 | 180 | 051 | 75.62 |
| P416-420 | 4X4X4X2 | 4 | 120 | 051 | 135.20 |

P417 Sanitary Tee with Right Side Inlet

ALL HUB



| | | | | | |
|----------|-------------|----|-----|-----|--------|
| P417-337 | 3X3X3X1-1/2 | 10 | 180 | 051 | 78.50 |
| P417-338 | 3X3X3X2 | 10 | 180 | 051 | 75.62 |
| P417-420 | 4X4X4X2 | 10 | 80 | 051 | 428.86 |

P418 Sanitary Tee with R&L Side Inlets

ALL HUB



| | | | | | |
|----------|-------------|---|-----|-----|--------|
| P418-337 | 3X3X3X1-1/2 | 5 | 175 | 051 | 103.26 |
| P418-338 | 3X3X3X2X2 | 5 | 150 | 051 | 100.06 |
| P418-420 | 4X4X4X2X2 | 5 | 90 | 051 | 436.92 |

Drain, Waste & Vent (DWV) Product
PVC DWV Drain Waste & Vent Fittings



PVC DWV Drain Waste & Vent Fittings

| Part Number | Size | Std Pk | Pltt Qty | Prod Code | MSRP |
|-------------|------|--------|----------|-----------|------|
|-------------|------|--------|----------|-----------|------|

P428 Double Sanitary Tee

ALL HUB



| | | | | | |
|----------|--------------|----|------|-----|--------|
| P428-015 | 1-1/2 | 25 | 1200 | 051 | 22.03 |
| P428-020 | 2 | 25 | 750 | 051 | 32.32 |
| P428-030 | 3 | 8 | 240 | 051 | 90.32 |
| P428-040 | 4 | 6 | 108 | 051 | 145.16 |

P429 Double Sanitary Tee, Reducing

ALL HUB



| | | | | | |
|----------|------------------------|----|-----|-----|--------|
| P429-251 | 2X2X1-1/2X1-1/2 | 25 | 900 | 051 | 24.37 |
| P429-337 | 3X3X1-1/2X1-1/2 | 6 | 432 | 051 | 51.83 |
| P429-338 | 3X3X2X2 | 10 | 300 | 051 | 54.51 |
| P429-419 | 4X4X1-1/2X1-1/2 | 7 | 245 | 051 | 192.01 |
| P429-420 | 4X4X2X2 | 7 | 245 | 051 | 120.11 |
| P429-422 | 4X4X3X3 | 8 | 144 | 051 | 123.22 |

P439 Double Sanitary Tee with R&L Side Inlets

ALL HUB



| | | | | | |
|----------|--------------------|---|-----|-----|--------|
| P439-338 | 3X3X3X3X2X2 | 4 | 120 | 051 | 115.20 |
| P439-420 | 4X4X4X4X2X2 | 4 | 72 | 051 | 160.53 |

P441 Vent Tee

ALL HUB



| | | | | | |
|----------|--------------|----|------|-----|---------|
| P441-015 | 1-1/2 | 25 | 1800 | 051 | 27.73 |
| P441-020 | 2 | 25 | 900 | 051 | 23.50 |
| P441-030 | 3 | 10 | 300 | 051 | 73.19 |
| P441-040 | 4 | 5 | 175 | 051 | 96.93 |
| P441-060 | 6 | 4 | 32 | 051 | 263.19 |
| P441-080 | 8 | 2 | 28 | 051 | 677.73 |
| P441-100 | 10 | 1 | 12 | 052 | 1263.37 |
| P441-120 | 12 | 1 | 10 | 052 | 2100.24 |

P442 Vent Tee, Reducing

ALL HUB



| | | | | | |
|----------|----------------|----|------|-----|---------|
| P442-251 | 2X1-1/2 | 25 | 1200 | 051 | 28.36 |
| P442-532 | 6X4 | 2 | 72 | 051 | 190.40 |
| P442-582 | 8X4 | 2 | 36 | 051 | 209.40 |
| P442-585 | 8X6 | 2 | 28 | 051 | 270.60 |
| P442-624 | 10X4 | 1 | 12 | 052 | 806.63 |
| P442-626 | 10X6 | 1 | 14 | 052 | 992.54 |
| P442-628 | 10X8 | 1 | 12 | 052 | 1119.68 |

| Part Number | Size | Std Pk | Pltt Qty | Prod Code | MSRP |
|-------------|------|--------|----------|-----------|------|
|-------------|------|--------|----------|-----------|------|

P442 Vent Tee, Reducing (continued)

ALL HUB

| | | | | | |
|----------|--------------|---|----|-----|---------|
| P442-664 | 12X4 | 1 | 10 | 052 | 1090.56 |
| P442-666 | 12X6 | 1 | 10 | 052 | 1245.33 |
| P442-668 | 12X8 | 1 | 10 | 052 | 1432.28 |
| P442-670 | 12X10 | 1 | 10 | 052 | 1709.04 |

P444X Cleanout Tee w/C.O. Plug

H x H



| | | | | | |
|-----------|--------------|----|------|-----|---------|
| P444X-015 | 1-1/2 | 20 | 1440 | 051 | 27.21 |
| P444X-020 | 2 | 10 | 1050 | 051 | 31.40 |
| P444X-030 | 3 | 10 | 350 | 051 | 60.00 |
| P444X-040 | 4 | 10 | 180 | 051 | 94.43 |
| P444X-060 | 6 | 2 | 70 | 051 | 523.57 |
| P444X-080 | 8 | 2 | 32 | 051 | 1677.60 |

P445 Flush C.O. Tee

H x H x FPT



| | | | | | |
|----------|--------------|----|------|-----|--------|
| P445-015 | 1-1/2 | 20 | 2100 | 051 | 19.49 |
| P445-020 | 2 | 25 | 1200 | 051 | 23.96 |
| P445-030 | 3 | 10 | 350 | 051 | 47.84 |
| P445-040 | 4 | 10 | 180 | 051 | 89.02 |
| P445-060 | 6 | 3 | 54 | 051 | 475.71 |

P445X Flush C.O. Tee w/C.O. Plug

H x H



| | | | | | |
|-----------|--------------|----|------|-----|--------|
| P445X-015 | 1-1/2 | 20 | 1440 | 051 | 25.48 |
| P445X-020 | 2 | 10 | 1050 | 051 | 37.28 |
| P445X-030 | 3 | 10 | 300 | 051 | 70.26 |
| P445X-040 | 4 | 10 | 180 | 051 | 96.26 |
| P445X-060 | 6 | 2 | 36 | 051 | 479.28 |

P447 Horizontal Twin Tee

ALL HUB



| | | | | | |
|----------|------------------------|---|-----|-----|--------|
| P447-337 | 3X3X1-1/2X1-1/2 | 5 | 360 | 051 | 141.99 |
|----------|------------------------|---|-----|-----|--------|

P448 2-WAY Cleanout

ALL HUB



| | | | | | |
|----------|----------|----|-----|-----|--------|
| P448-030 | 3 | 12 | 216 | 051 | 96.74 |
| P448-040 | 4 | 5 | 90 | 051 | 125.20 |



Drain, Waste & Vent (DWV) Product
PVC DWV Drain Waste & Vent Fittings

PVC DWV Drain Waste & Vent Fittings

| Part Number | Size | Std Pk | Pllt Qty | Prod Code | MSRP |
|-------------|------|--------|----------|-----------|------|
|-------------|------|--------|----------|-----------|------|

P500 Double Fixture Fitting

ALL HUB

| | | | | | |
|----------|---------------------|----|-----|-----|--------|
| P500-020 | 2X2X2X2 | 10 | 360 | 051 | 54.86 |
| P500-030 | 3X3X3X3 | 10 | 80 | 051 | 118.66 |
| P500-241 | 2X1-1/2X1-1/2X1-1/2 | 20 | 600 | 051 | 60.44 |
| P500-251 | 2X2X1-1/2X1-1/2 | 20 | 600 | 051 | 63.13 |
| P500-338 | 3X2X3X3 | 10 | 80 | 051 | 117.49 |



P501 Combination Wye and 1/8 Bend (One Piece)

ALL HUB

| | | | | | |
|----------|--------------|----|-----|-----|--------|
| P501-015 | 1-1/2 | 50 | 900 | 051 | 23.34 |
| P501-020 | 2 | 20 | 600 | 051 | 27.77 |
| P501-030 | 3 | 10 | 180 | 051 | 67.44 |
| P501-040 | 4 | 8 | 96 | 051 | 119.94 |

Notice: Fabricated Fittings (shaded lines) do not have "one-piece" construction



P502 Combination Wye and 1/8 Bend, Reducing (One Piece)

ALL HUB

| | | | | | |
|----------|------------------|----|-----|-----|-------|
| P502-251 | 2X2X1-1/2 | 20 | 700 | 051 | 33.57 |
| P502-337 | 3X3X1-1/2 | 15 | 450 | 051 | 58.16 |
| P502-338 | 3X3X2 | 10 | 300 | 051 | 44.60 |
| P502-420 | 4X4X2 | 5 | 150 | 051 | 74.41 |
| P502-422 | 4X4X3 | 5 | 90 | 051 | 90.62 |

Notice: Fabricated Fittings (shaded lines) do not have "one-piece" construction



P503 Combination Wye and 1/8 Bend (Two Piece)

ALL HUB

| | | | | | |
|----------|-----------|----|-----|-----|---------|
| P503-030 | 3 | 10 | 180 | 051 | 75.63 |
| P503-040 | 4 | 5 | 40 | 051 | 176.72 |
| P503-060 | 6 | 4 | 28 | 051 | 573.02 |
| P503-080 | 8 | 1 | 8 | 051 | 864.73 |
| P503-100 | 10 | 1 | 4 | 052 | 3325.60 |
| P503-120 | 12 | 1 | 4 | 052 | 3871.82 |



P504 Combination Wye and 1/8 Bend, Reducing (Two Piece)

ALL HUB

| | | | | | |
|-----------|------------|---|----|-----|--------|
| P504-422 | 4X3 | 5 | 90 | 051 | 136.32 |
| P504-530 | 6X3 | 5 | 40 | 051 | 602.89 |
| P504-532 | 6X4 | 5 | 35 | 051 | 509.98 |
| P504-580* | 8X3 | 2 | 16 | 051 | 557.67 |



| Part Number | Size | Std Pk | Pllt Qty | Prod Code | MSRP |
|-------------|------|--------|----------|-----------|------|
|-------------|------|--------|----------|-----------|------|

P504 Combination Wye and 1/8 Bend, Reducing (Two Piece)

(continued)

ALL HUB

| | | | | | |
|-----------|--------------|---|----|-----|---------|
| P504-582 | 8X4 | 2 | 16 | 051 | 522.63 |
| P504-585 | 8X6 | 1 | 8 | 051 | 858.53 |
| P504-623* | 10X3 | 1 | 12 | 052 | 1103.38 |
| P504-624* | 10X4 | 1 | 8 | 052 | 1168.30 |
| P504-626 | 10X6 | 1 | 8 | 052 | 1469.12 |
| P504-628 | 10X8 | 1 | 8 | 052 | 1828.79 |
| P504-664* | 12X4 | 1 | 4 | 052 | 1816.88 |
| P504-666* | 12X6 | 1 | 4 | 052 | 1887.32 |
| P504-668* | 12X8 | 1 | 6 | 052 | 2301.18 |
| P504-670* | 12X10 | 1 | 6 | 052 | 3409.76 |

* Bushed

P507 Double Combination Wye and 1/8 Bend

ALL HUB

| | | | | | |
|----------|-----------------|----|-----|-----|--------|
| P507-015 | 1-1/2 | 10 | 350 | 051 | 64.26 |
| P507-020 | 2 | 10 | 300 | 051 | 96.46 |
| P507-030 | 3 | 10 | 80 | 051 | 187.01 |
| P507-040 | 4 | 5 | 35 | 051 | 373.03 |
| P507-251 | 2X2X1-1/2X1-1/2 | 20 | 360 | 051 | 85.33 |
| P507-338 | 3X3X2X2 | 10 | 140 | 051 | 158.52 |
| P507-420 | 4X4X2X2 | 5 | 70 | 051 | 302.30 |
| P507-422 | 4X4X3X3 | 5 | 40 | 051 | 297.74 |



P515 Combination Wye and 1/8 Bend with Left Side Inlet

ALL HUB

| | | | | | |
|----------|----------------|----|-----|-----|--------|
| P515-338 | 3X3X3X2 | 10 | 140 | 051 | 138.62 |
|----------|----------------|----|-----|-----|--------|



P516 Combination Wye and 1/8 Bend with Right Side Inlet

ALL HUB

| | | | | | |
|----------|----------------|----|-----|-----|--------|
| P516-338 | 3X3X3X2 | 10 | 140 | 051 | 138.62 |
|----------|----------------|----|-----|-----|--------|



P517 Combination Wye and 1/8 Bend with R&L Side Inlets

ALL HUB

| | | | | | |
|----------|----------------|----|----|-----|--------|
| P517-338 | 3X3X3X2 | 10 | 80 | 051 | 155.67 |
|----------|----------------|----|----|-----|--------|



P600 Wye

ALL HUB

| | | | | | |
|----------|--------------|----|------|-----|--------|
| P600-015 | 1-1/2 | 45 | 1350 | 051 | 16.44 |
| P600-020 | 2 | 25 | 750 | 051 | 19.32 |
| P600-030 | 3 | 8 | 240 | 051 | 49.71 |
| P600-040 | 4 | 8 | 144 | 051 | 92.09 |
| P600-060 | 6 | 4 | 48 | 051 | 285.04 |



Drain, Waste & Vent (DWV) Product
PVC DWV Drain Waste & Vent Fittings



PVC DWV Drain Waste & Vent Fittings

| Part Number | Size | Std Pk | Plit Qty | Prod Code | MSRP |
|-------------|------|--------|----------|-----------|------|
|-------------|------|--------|----------|-----------|------|

P600 Wye (continued)

ALL HUB

| | | | | | |
|----------|-----------|---|----|-----|---------|
| P600-080 | 8 | 1 | 12 | 051 | 507.84 |
| P600-100 | 10 | 1 | 6 | 052 | 1564.57 |
| P600-120 | 12 | 1 | 4 | 052 | 2541.59 |



P601 Wye, Reducing

ALL HUB

| | | | | | |
|-----------------------|----------------------|----|-----|-----|---------|
| P601-241 | 2X1-1/2X1-1/2 | 25 | 875 | 051 | 27.21 |
| P601-251 | 2X2X1-1/2 | 25 | 900 | 051 | 23.78 |
| P601-257 | 2X1-1/2X2 | 10 | 480 | 051 | 37.21 |
| P601-337 | 3X3X1-1/2 | 15 | 450 | 051 | 33.18 |
| P601-338 | 3X3X2 | 12 | 360 | 051 | 37.58 |
| P601-419 | 4X4X1-1/2 | 10 | 300 | 051 | 101.73 |
| P601-420 | 4X4X2 | 10 | 180 | 051 | 51.38 |
| P601-422 | 4X4X3 | 10 | 140 | 051 | 73.19 |
| P601-528 ¹ | 6X6X2 | 5 | 40 | 051 | 286.92 |
| P601-530 | 6X6X3 | 6 | 48 | 051 | 276.89 |
| P601-532 | 6X6X4 | 5 | 40 | 051 | 232.62 |
| P601-578 ¹ | 8X8X2 | 3 | 24 | 051 | 560.90 |
| P601-580 ¹ | 8X8X3 | 2 | 28 | 051 | 553.93 |
| P601-582 | 8X8X4 | 2 | 28 | 051 | 490.39 |
| P601-585 | 8X8X6 | 1 | 14 | 051 | 505.67 |
| P601-624 ¹ | 10X10X4 | 1 | 12 | 052 | 891.27 |
| P601-626 | 10X10X6 | 1 | 12 | 052 | 1156.06 |
| P601-628 | 10X10X8 | 1 | 10 | 052 | 1367.98 |
| P601-664 ¹ | 12X12X4 | 1 | 6 | 052 | 1380.32 |
| P601-666 ¹ | 12X12X6 | 1 | 6 | 052 | 1507.14 |
| P601-668 ¹ | 12X12X8 | 1 | 6 | 052 | 1789.83 |
| P601-670 ¹ | 12X12X10 | 1 | 6 | 052 | 2004.30 |

¹ Sized with Bushing

P602 Wye, Street

S x H x H

| | | | | | |
|----------|--------------|----|------|-----|--------|
| P602-015 | 1-1/2 | 50 | 1500 | 051 | 26.04 |
| P602-020 | 2 | 30 | 540 | 051 | 30.96 |
| P602-030 | 3 | 10 | 180 | 051 | 65.97 |
| P602-040 | 4 | 10 | 80 | 051 | 130.74 |



P603 Wye, Street, Reducing

S x H x H

| | | | | | |
|----------|------------------|----|-----|-----|--------|
| P603-251 | 2X2X1-1/2 | 25 | 875 | 051 | 35.54 |
| P603-420 | 4X4X2 | 10 | 180 | 051 | 144.08 |
| P603-422 | 4X4X3 | 10 | 80 | 051 | 122.41 |



| Part Number | Size | Std Pk | Plit Qty | Prod Code | MSRP |
|-------------|------|--------|----------|-----------|------|
|-------------|------|--------|----------|-----------|------|

P611 Double Wye

ALL HUB

| | | | | | |
|----------|--------------|----|-----|-----|--------|
| P611-015 | 1-1/2 | 40 | 720 | 051 | 37.18 |
| P611-020 | 2 | 20 | 600 | 051 | 40.03 |
| P611-030 | 3 | 15 | 120 | 051 | 103.26 |
| P611-040 | 4 | 5 | 70 | 051 | 209.37 |
| P611-060 | 6 | 2 | 16 | 051 | 434.50 |



P611S Double Wye, with 2" Side Inlet

ALL HUB

| | | | | | |
|-----------|----------|----|-----|-----|--------|
| P611S-030 | 3 | 10 | 140 | 051 | 405.61 |
|-----------|----------|----|-----|-----|--------|



P612 Double Wye, Reducing

ALL HUB

| | | | | | |
|----------|------------------------|----|-----|-----|--------|
| P612-251 | 2X2X1-1/2X1-1/2 | 10 | 720 | 051 | 36.56 |
| P612-337 | 3X3X1-1/2X1-1/2 | 10 | 300 | 051 | 73.01 |
| P612-338 | 3X3X2X2 | 15 | 210 | 051 | 76.91 |
| P612-420 | 4X4X2X2 | 5 | 150 | 051 | 125.52 |
| P612-422 | 4X4X3X3 | 5 | 90 | 051 | 165.88 |
| P612-532 | 6X6X4X4 | 5 | 35 | 051 | 607.98 |



P335 Trap Elbow (for use with Traps only)

H x S

| | | | | | |
|----------|----------|----|-----|-----|--------|
| P335-030 | 3 | 30 | 540 | 051 | 45.53 |
| P335-040 | 4 | 25 | 200 | 051 | 145.93 |



P700 Return Bend

H x H

| | | | | | |
|----------|--------------|----|------|-----|--------|
| P700-015 | 1-1/2 | 20 | 1440 | 051 | 16.46 |
| P700-020 | 2 | 35 | 630 | 051 | 31.64 |
| P700-030 | 3 | 8 | 240 | 051 | 87.88 |
| P700-040 | 4 | 6 | 108 | 051 | 173.59 |
| P700-060 | 6 | 2 | 36 | 051 | 382.49 |
| P700-080 | 8 | 1 | 7 | 051 | 527.26 |



P704P Tail Piece Adapter

S x SLIP w/Plastic Nut - Built-in Washer

| | | | | | |
|-----------|--------------|----|------|-----|-------|
| P704P-015 | 1-1/2 | 25 | 4200 | 051 | 11.22 |
|-----------|--------------|----|------|-----|-------|





Drain, Waste & Vent (DWV) Product
PVC DWV Drain Waste & Vent Fittings

PVC DWV Drain Waste & Vent Fittings

| Part Number | Size | Std Pk | Plit Qty | Prod Code | MSRP |
|-------------|------|--------|----------|-----------|------|
|-------------|------|--------|----------|-----------|------|

P704X Tail Piece Adapter

S x SLIP w/Chrome Nut & Washer



| | | | | | |
|-----------|-------|----|------|-----|-------|
| P704X-015 | 1-1/2 | 25 | 4200 | 051 | 15.81 |
|-----------|-------|----|------|-----|-------|

P706X P-Trap

H x H



| | | | | | |
|-----------|-------|----|-----|-----|---------|
| P706X-015 | 1-1/2 | 25 | 875 | 051 | 20.60 |
| P706X-020 | 2 | 25 | 450 | 051 | 27.16 |
| P706X-030 | 3 | 10 | 80 | 051 | 94.27 |
| P706X-040 | 4 | 4 | 72 | 051 | 215.11 |
| P706X-060 | 6 | 2 | 16 | 051 | 661.84 |
| P706X-080 | 8 | 1 | 7 | 051 | 1287.89 |
| P706X-100 | 10 | 1 | 3 | 052 | 3250.08 |
| P706X-120 | 12 | 1 | 1 | 052 | 4430.29 |

P707X P-Trap w/Cleanout

H x H



| | | | | | |
|-----------|-------|----|-----|-----|-------|
| P707X-015 | 1-1/2 | 10 | 720 | 051 | 34.09 |
|-----------|-------|----|-----|-----|-------|

P708P Adjustable P-Trap w/Plastic Nut

H x H



| | | | | | |
|-----------|-------|----|-----|-----|-------|
| P708P-015 | 1-1/2 | 25 | 875 | 051 | 26.41 |
| P708P-020 | 2 | 25 | 450 | 051 | 57.38 |

P711P L.A. Pattern P-Trap w/Plastic Nut

SLIP x H w/Plastic Nut & Washer



| | | | | | |
|-----------|-------------|----|-----|-----|-------|
| P711P-169 | 1-1/4X1-1/2 | 25 | 750 | 051 | 44.93 |
| P711P-015 | 1-1/2 | 25 | 750 | 051 | 44.93 |

P711X L.A. Pattern P-Trap w/Chrome Nut

SLIP x H w/Chrome Nut & Washer



| | | | | | |
|-----------|-------|----|-----|-----|-------|
| P711X-015 | 1-1/2 | 25 | 900 | 051 | 52.54 |
|-----------|-------|----|-----|-----|-------|

P800 Closet Flange

H



| | | | | | |
|----------|-----|----|-----|-----|-------|
| P800-422 | 4X3 | 25 | 750 | 051 | 24.19 |
| P800-040 | 4X4 | 30 | 540 | 051 | 27.53 |

| Part Number | Size | Std Pk | Plit Qty | Prod Code | MSRP |
|-------------|------|--------|----------|-----------|------|
|-------------|------|--------|----------|-----------|------|

P800G Closet Flange w/Gussets

H



| | | | | | |
|-----------|---|----|-----|-----|--------|
| P800G-040 | 4 | 30 | 540 | 051 | 119.43 |
|-----------|---|----|-----|-----|--------|

P800KO Closet Flange with Knockout

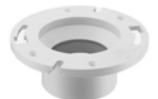
H



| | | | | | |
|------------|-----|----|-----|-----|-------|
| P800KO-422 | 4X3 | 25 | 750 | 051 | 28.16 |
|------------|-----|----|-----|-----|-------|

P800S Closet Flange with Stop

H



| | | | | | |
|-----------|-----|----|-----|-----|-------|
| P800S-422 | 4X3 | 25 | 750 | 051 | 24.19 |
|-----------|-----|----|-----|-----|-------|

P801 Closet Flange, Reducing

SPIGOT



| | | | | | |
|----------|-----|----|-----|-----|-------|
| P801-422 | 4X3 | 25 | 750 | 051 | 29.44 |
|----------|-----|----|-----|-----|-------|

P811 Closet Flange w/Adjustable Metal Ring

H



| | | | | | |
|----------|-----|----|-----|-----|-------|
| P811-040 | 4 | 30 | 540 | 051 | 67.06 |
| P811-422 | 4X3 | 30 | 540 | 051 | 47.38 |

P811KO Closet Flange w/Adjustable Metal Ring and Knockout

H



| | | | | | |
|------------|-----|----|-----|-----|-------|
| P811KO-422 | 4X3 | 25 | 350 | 051 | 67.44 |
|------------|-----|----|-----|-----|-------|

P812 Closet Flange w/Adjustable Metal Ring

SPIGOT



| | | | | | |
|----------|-----|----|-----|-----|-------|
| P812-040 | 4 | 25 | 450 | 051 | 73.11 |
| P812-422 | 4X3 | 25 | 450 | 051 | 63.50 |

P813 Flush Closet Flange w/Adjustable Metal Ring

Fits Over 3" Pipe or Inside 4" Pipe



| | | | | | |
|----------|-----|----|-----|-----|-------|
| P813-422 | 4X3 | 25 | 750 | 051 | 63.50 |
|----------|-----|----|-----|-----|-------|

Drain, Waste & Vent (DWV) Product
PVC DWV Drain Waste & Vent Fittings



PVC DWV Drain Waste & Vent Fittings

| Part Number | Size | Std Pk | Pltt Qty | Prod Code | MSRP |
|-------------|------|--------|----------|-----------|------|
|-------------|------|--------|----------|-----------|------|

P815 Flush Closet Flange

Fits Over 3" Pipe or Inside 4" Pipe



| | | | | | |
|----------|-----------|----|-----|-----|-------|
| P815-040 | 4X4 / 4X3 | 25 | 750 | 051 | 46.56 |
|----------|-----------|----|-----|-----|-------|

P815KO Flush Closet Flange with Knockout

Fits Over 3" Pipe or Inside 4" Pipe



| | | | | | |
|------------|-----------|----|-----|-----|-------|
| P815KO-040 | 4X4 / 4X3 | 25 | 750 | 051 | 45.02 |
|------------|-----------|----|-----|-----|-------|

P820 Offset Closet Flange w/Adjustable Metal Ring

(1-1/2" Offset) H



| | | | | | |
|----------|-----|----|-----|-----|-------|
| P820-422 | 4X3 | 15 | 450 | 051 | 83.73 |
|----------|-----|----|-----|-----|-------|

Uniform Plumbing Code does not accept offset closet flanges

Floor Drain with Stainless Steel Adjustable Top w/Round Grate



| | | | | | |
|------------|---------|---|-----|-----|---------|
| P1500-015S | 1-1/2X5 | 4 | 216 | 054 | 1194.81 |
| P1600-015S | 1-1/2X6 | 4 | 216 | 054 | 1287.02 |
| P1700-015S | 1-1/2X7 | 4 | 0 | 054 | 1333.27 |
| P1800-015S | 1-1/2X8 | 4 | 216 | 054 | 1714.84 |
| P1500-020S | 2X5 | 4 | 216 | 054 | 1194.81 |
| P1600-020S | 2X6 | 4 | 400 | 054 | 1287.02 |
| P1700-020S | 2X7 | 4 | 0 | 054 | 1333.27 |
| P1800-020S | 2X8 | 4 | 0 | 054 | 1714.84 |
| P1500-030S | 3X5 | 4 | 216 | 054 | 1194.81 |
| P1600-030S | 3X6 | 4 | 400 | 054 | 1287.02 |
| P1700-030S | 3X7 | 2 | 54 | 054 | 1333.27 |
| P1800-030S | 3X8 | 4 | 216 | 054 | 1714.84 |
| P1500-040S | 4X5 | 4 | 216 | 054 | 1194.81 |
| P1600-040S | 4X6 | 4 | 1 | 054 | 1287.02 |
| P1700-040S | 4X7 | 4 | 400 | 054 | 1333.27 |
| P1800-040S | 4X8 | 4 | 144 | 054 | 1714.84 |

Floor Drain with Stainless Steel Adjustable Top w/Round Grate & Membrane Collar



| | | | | | |
|------------|---------|---|-----|-----|---------|
| P150M-015S | 1-1/2X5 | 4 | 216 | 054 | 1285.45 |
| P160M-015S | 1-1/2X6 | 4 | 216 | 054 | 1456.46 |
| P170M-015S | 1-1/2X7 | 4 | 0 | 054 | 1500.61 |
| P180M-015S | 1-1/2X8 | 4 | 216 | 054 | 1788.56 |
| P150M-020S | 2X5 | 1 | 175 | 054 | 1285.45 |
| P160M-020S | 2X6 | 4 | 216 | 054 | 1456.46 |
| P170M-020S | 2X7 | 4 | 0 | 054 | 1500.61 |
| P180M-020S | 2X8 | 4 | 0 | 054 | 1788.56 |

| Part Number | Size | Std Pk | Pltt Qty | Prod Code | MSRP |
|-------------|------|--------|----------|-----------|------|
|-------------|------|--------|----------|-----------|------|

Floor Drain with Stainless Steel Adjustable Top w/Round Grate & Membrane Collar (continued)

| | | | | | |
|------------|-----|---|-----|-----|---------|
| P150M-030S | 3X5 | 4 | 216 | 054 | 1285.45 |
| P160M-030S | 3X6 | 4 | 216 | 054 | 1456.46 |
| P170M-030S | 3X7 | 2 | 54 | 054 | 1500.61 |
| P180M-030S | 3X8 | 2 | 144 | 054 | 1788.56 |
| P150M-040S | 4X5 | 4 | 216 | 054 | 1285.45 |
| P160M-040S | 4X6 | 4 | 216 | 054 | 1456.46 |
| P170M-040S | 4X7 | 4 | 192 | 054 | 1500.61 |
| P180M-040S | 4X8 | 4 | 0 | 054 | 1788.56 |

Floor Cleanout w/Stainless Steel Adjustable Round Top & Solid Access Cover



| | | | | | |
|------------|---------|---|-----|-----|---------|
| P1510-015S | 1-1/2X5 | 4 | 216 | 054 | 1334.12 |
| P1510-020S | 2X5 | 6 | 210 | 054 | 1334.12 |
| P1510-030S | 3X5 | 4 | 400 | 054 | 1334.12 |
| P1510-040S | 4X5 | 4 | 400 | 054 | 1334.12 |

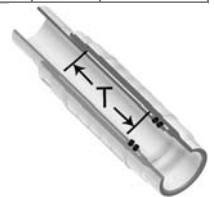
Floor Cleanout w/Stainless Steel Adjustable Round Top, Solid Access Cover & Membrane Collar



| | | | | | |
|------------|---------|---|-----|-----|---------|
| P151M-015S | 1-1/2X5 | 4 | 216 | 054 | 1405.20 |
| P151M-020S | 2X5 | 4 | 216 | 054 | 1405.20 |
| P151M-030S | 3X5 | 4 | 216 | 054 | 1405.20 |
| P151M-040S | 4X5 | 4 | 54 | 054 | 1405.20 |

S118 Expansion Joint

Spg x Soc - PVC White with EPDM O-ring



| | | | | | |
|---------|-------|----|-----|-----|--------|
| S118-15 | 1-1/2 | 25 | 900 | 025 | 32.92 |
| S118-20 | 2 | 12 | 576 | 025 | 50.92 |
| S118-25 | 2-1/2 | 5 | 120 | 025 | 73.85 |
| S118-30 | 3 | 4 | 96 | 025 | 92.24 |
| S118-40 | 4 | 2 | 70 | 025 | 161.45 |
| S118-60 | 6 | 1 | 24 | 025 | 395.04 |

S119 Expansion Joint

Soc x Soc - PVC White with EPDM O-ring



| | | | | | |
|---------|-------|----|-----|-----|--------|
| S119-15 | 1-1/2 | 16 | 768 | 025 | 32.92 |
| S119-20 | 2 | 10 | 480 | 025 | 50.92 |
| S119-25 | 2-1/2 | 5 | 120 | 025 | 73.85 |
| S119-30 | 3 | 4 | 96 | 025 | 92.24 |
| S119-40 | 4 | 2 | 70 | 025 | 161.45 |
| S119-60 | 6 | 1 | 24 | 025 | 395.04 |



Drain, Waste & Vent (DWV) Product PVC DWV Drain Waste & Vent Fittings & Sewer Disconnect

PVC DWV Drain Waste & Vent Fittings

| Part Number | Size | Std Pk | Plt Qty | Prod Code | MSRP |
|-------------|------|--------|---------|-----------|------|
|-------------|------|--------|---------|-----------|------|

826 Large Diameter Expansion Joint

Soc x Soc - PVC Gray with EPDM O-ring

| | | | | | |
|-----------|----|---|----|-----|---------|
| 826-080X6 | 8 | 1 | 12 | 085 | 2974.42 |
| 826-100X6 | 10 | 1 | 12 | 085 | 3492.77 |
| 826-120X6 | 12 | 1 | 4 | 085 | 6188.81 |
| 826-140X6 | 14 | 1 | 4 | 085 | 7069.33 |

Air Admittance valve With Diaphragm Seal

Spigot

Maximum 6 DFU (Drainage Fixture Units)

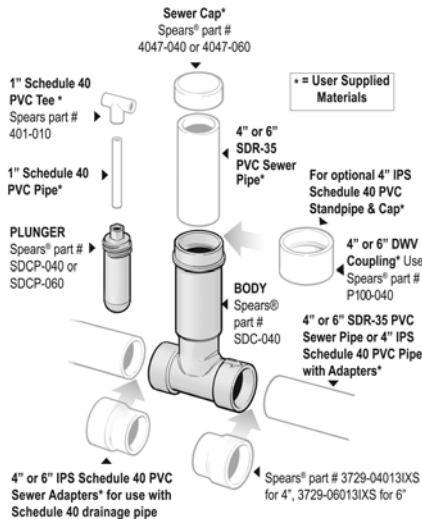
| | | | | | |
|----------|-------|----|------|-----|-------|
| AADV-015 | 1-1/2 | 12 | 2016 | 285 | 91.39 |
|----------|-------|----|------|-----|-------|

Air Admittance Valve With Ball Seal

Spigot

Maximum 6 DFU (Drainage Fixture Units)

| | | | | | |
|---------|-------|----|------|-----|--------|
| AAV-015 | 1-1/2 | 12 | 2016 | 285 | 112.52 |
|---------|-------|----|------|-----|--------|



Sewer Disconnect

Sewer Disconnect Application

Requires Purchase of SDC-040 Body and SDCP-040 Plunger, Sold Separately.



Screw-down Plunger installs in Body to provide temporary shut-off of Sewer line or to minimize sewage backup from sewer mains during flooding. Body accepts SDR-35 Sewer Pipe (or any ASTM D 3034 /D 2729 pipe), but can easily adapt to Schedule 40 drainage pipe using 4" IPS socket x Sewer spigot adapters, Spears® part no. 3729-04013IXS.

Standpipe to grade can be easily fabricated from user-supplied SDR-35 Sewer Pipe or optionally from Schedule 40 drainage pipe with the addition of a 4" Schedule 40 DWV socket Coupling, Spears® part no. P100-040. For Closure, a 4" Sewer Cap, Spears® part no. 4047-040; or 4" Schedule 40 DWV Cap, Spears® part no. P116-040 can be used as applicable.

A T-handle extension for easy Plunger operation can also be fabricated from user supplied 1" Schedule 40 pipe and a Tee fitting, Spears® part no. 401-010. See installation instructions included with product for additional detail.

Sewer Disconnect Body

| Part Number | Size | Std Pk | Plt Qty | Prod Code | MSRP |
|-------------|------|--------|---------|-----------|------|
|-------------|------|--------|---------|-----------|------|

Sewer Socket X Sewer Socket.

Requires Purchase of SDCP-040 or SDCP-060 Plunger

| | | | | | |
|---------|---|---|-----|-----|--------|
| SDC-040 | 4 | 6 | 108 | 055 | 159.82 |
| SDC-060 | 6 | 2 | 28 | 055 | 243.33 |

Sewer Disconnect Plunger

| Part Number | Size | Std Pk | Plt Qty | Prod Code | MSRP |
|-------------|------|--------|---------|-----------|------|
|-------------|------|--------|---------|-----------|------|

For Use With Sewer Disconnect Body Purchased Separately.

Requires Purchase of SDC-040 or SDC-060 Body

| | | | | | |
|----------|---|----|-----|-----|--------|
| SDCP-040 | 4 | 12 | 420 | 055 | 55.04 |
| SDCP-060 | 6 | 6 | 180 | 055 | 107.43 |

Optional IPS x SEWER Adapter

IPS Socket x Sewer Spigot for adapting Sewer Disconnect Body to Schedule 40 drainage pipe



| | | | | | |
|---------------|---|---|-----|-----|-------|
| 3729-04013IXS | 4 | 1 | 360 | 399 | 36.57 |
| 3729-06013IXS | 6 | 1 | 120 | 399 | 77.22 |

Drain, Waste & Vent (DWV) Product Utility Backwater Valve



Utility Backwater Valve



Spears® Utility Backwater Valves feature an easily serviceable and replaceable Flapper Assembly with extendable access using standard piping components. Designed for direct solvent cement connection to ASTM D 2665 DWV drainage pipe or any other IPS size pipe. Spears® IPS x Sewer adapters easily convert valve to ASTM D 3034 SDR 35 Sewer Pipe. Utility Backwater Valves conform to the requirements of ASME/ANSI and are designed

to prevent backflow in numerous applications where easy service access for maintenance and cleaning is needed. Excellent for use in sanitary or storm sewer drainage systems to prevent waste back up due to inadequate drainage, for balancing multi-level ponds, aquaculture features or storage tank systems, and many other applications. Spears® Utility Backwater Valve has been engineered for easier installation with included Extension Kit Adapter components for use with User-Supplied Schedule 40 or Class 125 Extension Riser pipe cut to desired length. Utility Backwater Valve package comes with 50 psi (115 feet of head) rated Extension Adapters. Optional Adapter Kits available in 100 psi (232 feet of head) rating. Can also use User-supplied equivalent adapter components.

- Replaceable internal flapper assembly.
- Extension Kit Adapter components allow easy use with assembly user supplied pipe cut to desired length.
- Direct Valve Connection to ASTM D 2665 PVC DWV or other IPS size pipe. Spears® IPS DWV x Sewer & Drain Adapter are available for connection to ASTM D 3034 & ASTM D 2729 Sewer pipe.
- Utility Backwater Valve is Pressure Rated to 50psi (115 feet of head) or 100psi (232 feet of head) @ 73°F (23°C) with Appropriate Extension Adapter Selection.
- Conforms to ASME/ANSI A112.14.1 for Backwater Valves.

| Part Number | Size | Std Pk | Pklt Qty | Prod Code | MSRP |
|-------------|------|--------|----------|-----------|------|
|-------------|------|--------|----------|-----------|------|

Utility Backwater Valve w/Extension Adapters

Valve Package includes Body, Flapper Assembly and Extension Adapters (female thread & male thread plug) with 50 psi Extension Adapters Rating 100 psi Extension Adapter Available.



Requires User-Supplied 6" (for 4" valves) or 8" (for 6" valves) from Schedule 40 or Class 125 Riser Extension Pipe cut to desired length and 1" or 1-1/4" Internal Extension Pipe

| | | | | | |
|-------|---|---|----|-----|--------|
| SML-3 | 3 | 1 | 36 | 055 | 128.07 |
| SML-4 | 4 | 1 | 36 | 055 | 143.99 |
| SML-6 | 6 | 1 | 14 | 055 | 194.27 |

Utility Backwater Valve Only

Includes Valve Body & Flapper Assembly

Socket x Socket

Requires used of either 50 psi or 100 psi Extension Kit, or use of User-supplied equivalent components



| | | | | | |
|-----------|---|---|----|-----|--------|
| SML-3XP-A | 3 | 1 | 54 | 055 | 88.54 |
| SML-4XP-A | 4 | 1 | 54 | 055 | 97.55 |
| SML-6XP-A | 6 | 1 | 21 | 055 | 144.46 |

| Part Number | Size | Std Pk | Pklt Qty | Prod Code | MSRP |
|-------------|------|--------|----------|-----------|------|
|-------------|------|--------|----------|-----------|------|

Utility Backwater Valve Extension Adapter Kit

Select 50 psi or 100 psi Kit

Kit includes Female Threaded Cleanout Adapter and Male Threaded Plug for use with User-Supplied 6" (for 4" valves) or 8" (for 6" valves) from Schedule 40 or Class 125 Riser Extension Pipe



Note: 50 psi Kits have DWV Cleanout Plugs, 100 psi kits have Schedule 40 Threaded Plugs. User-supplied equivalent components can also be used.

| | | | | | |
|----------------|-----------------|---|-----|-----|--------|
| SML4XP-A-EK50 | 3" & 4" 50 psi | 1 | 105 | 055 | 74.32 |
| SML4XP-A-EK100 | 3" & 4" 100 psi | 1 | 105 | 055 | 153.26 |
| SML6XP-A-EK50 | 6" 50 psi | 3 | 90 | 055 | 104.23 |
| SML6XP-A-EK100 | 6" 100 psi | 3 | 90 | 055 | 191.34 |

Utility Backwater Valve Flapper Replacement Kit

Kit include Flapper Assembly For Repair or Replacement



| | | | | | |
|--------------|---------|---|-----|-----|-------|
| SML4XP-A-FRK | 3" & 4" | 1 | 720 | 055 | 60.45 |
| SML6XP-A-FRK | 6 | 1 | 240 | 055 | 71.82 |

IPSX Sewer Adapter

IPS DWV Spigot x Sewer Hub



Adapts IPS DWV Valve Socket to Sewer Pipe

| | | | | | |
|---------------|---|----|------|-----|--------|
| P118-030 | 3 | 25 | 1800 | 051 | 16.79 |
| P118-040 | 4 | 10 | 1050 | 051 | 18.14 |
| 3729-06031IXS | 6 | 1 | 120 | 399 | 111.19 |

Industrial PVC Backwater Valves

Backwater Valves are designed to prevent backflow in numerous applications where easy service access for maintenance and cleaning is needed. Excellent for use in sanitary or storm sewer drainage systems to prevent waste back up due to inadequate drainage, for balancing multi-level ponds, aquaculture features or storage tank systems, and many other applications. Spears® Backwater Valve has been engineered for improved function and easier service, especially in buried service with use of optional Service-Access Extension available either preassembled with valve or as an add-on kit.

- Replaceable internal flapper assembly with EPDM Seat.
- Service-Access Extension available either preassembled with valve, as an add-on kit, or as valve & extension kit components with user supplied pipe.
- Direct Connection to ASTM D 2665 PVC DWV or other IPS size pipe. Spears® fabricated IPS x Sewer Adapters or DWV x Sewer & Drain Adapter Bushings are available for connection to ASTM D 3034 & ASTM D 2729 Sewer pipe.
- Pressure Rated to 43 psi (100 feet of head) @ 73°F (23°C).
- All extension kits can be cut shorter for custom application.
- Conforms to ASME/ANSI A112.14.1 for Backwater Valves.

Continued (See next page)



Drain, Waste & Vent (DWV) Product Industrial PVC Backwater Valves

Industrial PVC Backwater Valves

(Continued)

PVC Backwater Valves



Backwater Valves - Valve Only

| Part Number | Size | Std Pk | Pllt Qty | Prod Code | MSRP |
|-------------|------|--------|----------|-----------|------|
|-------------|------|--------|----------|-----------|------|

Socket x Socket

| | | | | | |
|-------|---|---|-----|-----|--------|
| S275P | 2 | 1 | 384 | 055 | 143.09 |
| S375P | 3 | 2 | 210 | 055 | 162.60 |
| S475P | 4 | 1 | 54 | 055 | 189.78 |
| S675P | 6 | 1 | 30 | 055 | 614.29 |

¹ - Inlet/Outlet are sized with bushings

PVC Backwater Valves with Extension Kit to Premade Length



Backwater Valves with Extension Kit to Premade Length

| Part Number | Size | Std Pk | Pllt Qty | Prod Code | MSRP |
|-------------|------|--------|----------|-----------|------|
|-------------|------|--------|----------|-----------|------|

Socket x Socket

Assembled with Extension

| | | | | | |
|------------------------|--------|---|----|-----|--------|
| S275P-120 ¹ | 2X12HT | 1 | 98 | 055 | 391.79 |
| S275P-160 ¹ | 2X16HT | 1 | 98 | 055 | 421.41 |
| S275P-200 ¹ | 2X20HT | 1 | 98 | 055 | 451.05 |
| S275P-240 ¹ | 2X24HT | 1 | 98 | 055 | 480.67 |
| S275P-360 ¹ | 2X36HT | 1 | 98 | 055 | 504.87 |
| S275P-480 ¹ | 2X48HT | 1 | 98 | 055 | 554.91 |
| S375P-120 ¹ | 3X12HT | 1 | 36 | 055 | 391.79 |
| S375P-160 ¹ | 3X16HT | 1 | 15 | 055 | 421.41 |
| S375P-200 ¹ | 3X20HT | 1 | 15 | 055 | 451.05 |
| S375P-240 ¹ | 3X24HT | 1 | 15 | 055 | 480.67 |
| S375P-360 ¹ | 3X36HT | 1 | 15 | 055 | 504.87 |
| S375P-480 ¹ | 3X48HT | 1 | 15 | 055 | 554.91 |
| S475P-120 ¹ | 4X12HT | 1 | 18 | 055 | 508.93 |
| S475P-160 ¹ | 4X16HT | 1 | 12 | 055 | 549.04 |
| S475P-200 ¹ | 4X20HT | 1 | 30 | 055 | 585.56 |
| S475P-240 ¹ | 4X24HT | 1 | 19 | 055 | 624.36 |
| S475P-360 ¹ | 4X36HT | 1 | 12 | 055 | 655.76 |

Backwater Valves with Extension Kit to Premade Length

(continued)

| Part Number | Size | Std Pk | Pllt Qty | Prod Code | MSRP |
|-------------|------|--------|----------|-----------|------|
|-------------|------|--------|----------|-----------|------|

Socket x Socket

| | | | | | |
|------------------------|--------|---|----|-----|---------|
| S475P-480 ¹ | 4X48HT | 1 | 12 | 055 | 720.61 |
| S675P-120 ¹ | 6X12HT | 1 | 30 | 055 | 1068.62 |
| S675P-160 ¹ | 6X16HT | 1 | 30 | 055 | 1152.96 |
| S675P-200 ¹ | 6X20HT | 1 | 30 | 055 | 1229.65 |
| S675P-240 ¹ | 6X24HT | 1 | 30 | 055 | 1311.36 |
| S675P-360 ¹ | 6X36HT | 1 | 30 | 055 | 1377.06 |
| S675P-480 ¹ | 6X48HT | 1 | 1 | 055 | 1513.24 |

¹ - Size designates nominal valve size x extension height (HT-top of valve to top of extension, inches)

PVC Service-Access Extension Kit Only to Premade Length



PVC Service-Access Extension Kit: includes factory assembled internal flap assembly, assembly extension pipe, and external extension housing with top access adapter. Requires solvent cement assembly to existing valve and uses existing threaded Access Plug. Standard Extensions are available in convenient increments of 12", 16", 20", 24", 36", and 48" (measured from top of valve to top of extension). Contact Spears® for pricing on custom cut lengths. All extension kits can be cut shorter in the field for custom fits prior to cementing access adapter in place.

Service-Access Extension Kit Only to Premade Length

| Part Number | Size | Std Pk | Pllt Qty | Prod Code | MSRP |
|---------------------------|--------|--------|----------|-----------|--------|
| SAEK-020-120 ¹ | 2X12HT | 1 | 65 | 055 | 122.20 |
| SAEK-020-160 ¹ | 2X16HT | 1 | 36 | 055 | 125.71 |
| SAEK-020-200 ¹ | 2X20HT | 1 | 5 | 055 | 129.02 |
| SAEK-020-240 ¹ | 2X24HT | 1 | 5 | 055 | 135.16 |
| SAEK-020-360 ¹ | 2X36HT | 1 | 20 | 055 | 141.59 |
| SAEK-020-480 ¹ | 2X48HT | 1 | 5 | 055 | 148.51 |
| SAEK-030-120 ¹ | 3X12HT | 1 | 65 | 055 | 132.53 |
| SAEK-030-160 ¹ | 3X16HT | 1 | 36 | 055 | 149.58 |
| SAEK-030-200 ¹ | 3X20HT | 1 | 8 | 055 | 158.45 |
| SAEK-030-240 ¹ | 3X24HT | 1 | 49 | 055 | 178.57 |
| SAEK-030-360 ¹ | 3X36HT | 1 | 30 | 055 | 211.26 |
| SAEK-030-480 ¹ | 3X48HT | 1 | 30 | 055 | 249.86 |
| SAEK-040-120 ¹ | 4X12HT | 1 | 36 | 055 | 377.36 |
| SAEK-040-160 ¹ | 4X16HT | 1 | 12 | 055 | 404.71 |
| SAEK-040-200 ¹ | 4X20HT | 1 | 24 | 055 | 446.96 |
| SAEK-040-240 ¹ | 4X24HT | 1 | 12 | 055 | 485.48 |
| SAEK-040-360 ¹ | 4X36HT | 1 | 12 | 055 | 621.28 |
| SAEK-040-480 ¹ | 4X48HT | 1 | 12 | 055 | 757.12 |
| SAEK-060-120 ¹ | 6X12HT | 1 | 4 | 055 | 553.83 |

Drain, Waste & Vent (DWV) Product
Industrial PVC Backwater Valves



Industrial PVC Backwater Valves

Service-Access Extension Kit Only to Premade Length (continued)

| Part Number | Size | Std Pk | Pllt Qty | Prod Code | MSRP |
|---------------------------|--------|--------|----------|-----------|---------|
| SAEK-060-160 ¹ | 6X16HT | 1 | 12 | 055 | 680.81 |
| SAEK-060-200 ¹ | 6X20HT | 4 | 12 | 055 | 756.88 |
| SAEK-060-240 ¹ | 6X24HT | 1 | 6 | 055 | 833.81 |
| SAEK-060-360 ¹ | 6X36HT | 1 | 6 | 055 | 1076.29 |
| SAEK-060-480 ¹ | 6X48HT | 1 | 7 | 055 | 1315.83 |

¹ - Size designates nominal valve size x extension height (HT-top of valve to top of extension, inches)

PVC Backwater Valve with Extension Components



Backwater Valve with Extension Components

| Part Number | Size | Std Pk | Pllt Qty | Prod Code | MSRP |
|-------------|------|--------|----------|-----------|------|
|-------------|------|--------|----------|-----------|------|

Socket x Socket

Must be assembled with user supplied pipe (see Table 1)

| | | | | | |
|----------|---|---|-----|-----|--------|
| S275P-AK | 2 | 1 | 240 | 055 | 193.44 |
| S375P-AK | 3 | 1 | 105 | 055 | 236.38 |
| S475P-AK | 4 | 1 | 36 | 055 | 269.42 |
| S675P-AK | 6 | 1 | 14 | 055 | 749.59 |

¹ - Inlet/Outlet are sized with bushings

PVC Backwater Valve Extension Components Only



Backwater Valve Extension Components Only

| Part Number | Size | Std Pk | Pllt Qty | Prod Code | MSRP |
|-------------|------|--------|----------|-----------|------|
|-------------|------|--------|----------|-----------|------|

Must be assembled with user supplied pipe (see Table 1)

| | | | | | |
|-----------|---|---|-----|-----|--------|
| S275P-ECK | 2 | 1 | 240 | 055 | 106.99 |
| S375P-ECK | 3 | 1 | 240 | 055 | 134.48 |
| S475P-ECK | 4 | 1 | 72 | 055 | 145.04 |

Backwater Valve Extension Components Only (continued)

| Part Number | Size | Std Pk | Pllt Qty | Prod Code | MSRP |
|-------------|------|--------|----------|-----------|--------|
| S675P-ECK | 6 | 1 | 48 | 055 | 359.88 |

Table 1: User Supplied Pipe Requirements For Use With Extension Components

| Valve Size | Acceptable RISER Pipe Types for User-Supplied Pipe | Acceptable HANDLE Pipe |
|------------|---|--|
| 2" | 4" Class 125 PVC PIPE 4" Sch 40 PVC PIPE | Use any 3/4" IPS plastic pipe ¹ |
| 3" | 5" Class 125 PVC PIPE 5" Sch 40 PVC PIPE ³ 6" D3034 (SDR 35) PVC SEWER PIPE ² | |
| 4" | 8" Class 125 PVC PIPE 8" Sch 40 PVC PIPE | |
| 6" | 10" Class 125 PVC PIPE 10" Sch 40 PVC PIPE | |

Note 1: Riser and Handle pipe are *not* the same length. Sch 40 and/or Sch 80 pipe as well as ABS may be used. Special cement must be used to join PVC to ABS.
 Note 2: When 6" SDR35 pipe is used, adapter fits pipe inside diameter.
 Note 3: DO NOT use Sch 80 for 3" Riser pipe.

Industrial Backwater Valve Flapper Repair Kit



Backwater Valve Flapper Repair Kit

| Part Number | Size | Std Pk | Pllt Qty | Prod Code | MSRP |
|-------------|------|--------|----------|-----------|------|
|-------------|------|--------|----------|-----------|------|

Complete Flapper Assembly replacement

| | | | | | |
|-----------|---|---|------|-----|--------|
| S275P-FRK | 2 | 1 | 1680 | 055 | 56.64 |
| S375P-FRK | 3 | 1 | 1050 | 055 | 60.72 |
| S475P-FRK | 4 | 1 | 720 | 055 | 65.39 |
| S675P-FRK | 6 | 1 | 240 | 055 | 223.45 |

PVC Backwater Valve Metric Adapters



Backwater Valve Metric Adapters

| Part Number | Size | Std Pk | Pllt Qty | Prod Code | MSRP |
|-------------|------|--------|----------|-----------|------|
|-------------|------|--------|----------|-----------|------|

Metric Socket x ASTM Spigot

| | | | | | |
|------------|-----------|----|------|-----|-------|
| S275MA-063 | 63mm X 2 | 50 | 2400 | 055 | 33.61 |
| S375MA-090 | 90mm X 3 | 25 | 750 | 055 | 36.12 |
| S475MA-110 | 110mm X 4 | 10 | 480 | 055 | 42.77 |
| S675MA-160 | 160mm X 6 | 4 | 120 | 055 | 98.76 |